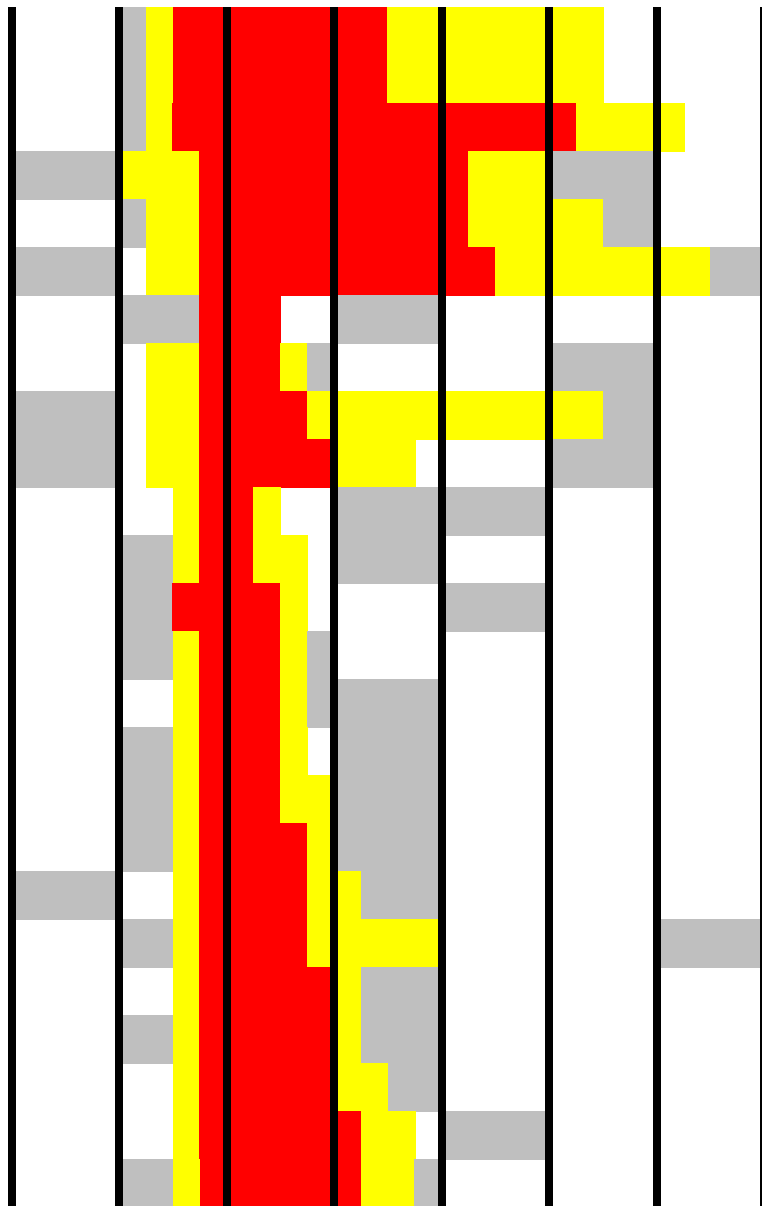
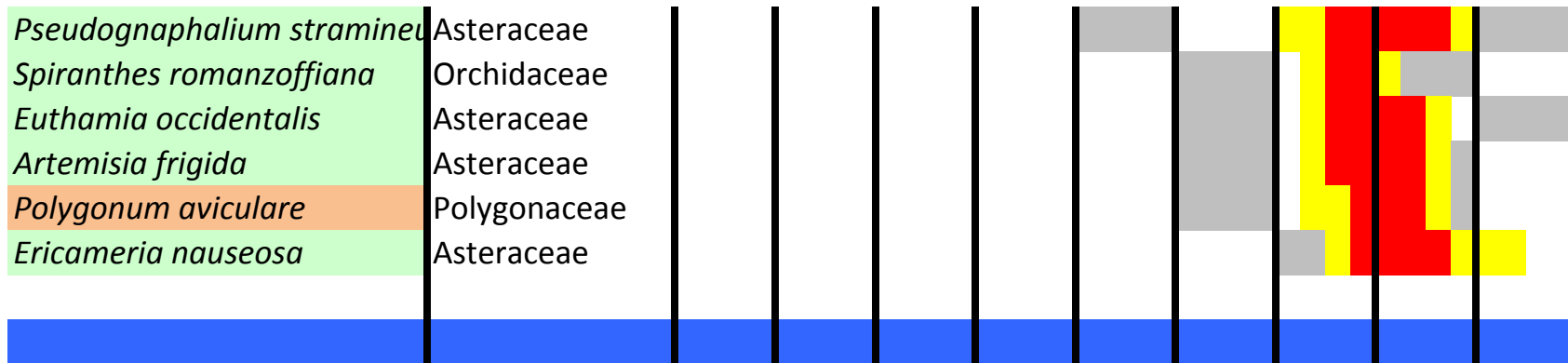


TAXON	FAMILY	FEB	MAR	APR	MAY	JUN	JUL	AUG	SEP	OCT
<i>Ranunculus glaberrimus</i>	Ranunculaceae	Yellow	Red	Red	Yellow		Grey			
<i>Lomatium geyeri</i>	Apiaceae	Grey	Yellow	Red	Yellow	Grey				
<i>Fritillaria pudica</i>	Liliaceae	Grey	Yellow	Red	Yellow	Grey				
<i>Draba verna</i>	Brassicaceae	Grey	Yellow	Red	Yellow	Grey				
<i>Boechera collinsi</i>	Brassicaceae	Grey	Yellow	Red	Yellow	Grey				
<i>Daphne mezereum</i>	Thymeliaceae	Grey	Yellow	Red	Yellow					
<i>Ranunculus testiculatus</i>	Ranunculaceae		Yellow	Red	Yellow	Grey				
<i>Polemonium micranthum</i>	Polemoniaceae		Yellow	Red	Yellow					
<i>Collinsia parviflora</i>	Plantaginaceae		Yellow	Red	Yellow	Grey				
<i>Montia dichotoma</i>	Montiaceae		Yellow	Red	Yellow					
<i>Stellaria media</i>	Caryophyllaceae	Grey	Yellow	Red	Red	Red	Red	Yellow	Yellow	Grey
<i>Erythronium grandiflorum</i>	Liliaceae		Grey	Red	Yellow			Grey		
<i>Chorispora tenella</i>	Brassicaceae		Yellow	Red	Yellow	Grey				
<i>Claytonia lanceolata</i>	Montiaceae		Yellow	Red	Yellow		Grey			
<i>Saxifraga nidifica</i>	Saxifragaceae	Grey	Yellow	Red	Yellow	Grey				
<i>Taraxacum officinale</i>	Asteraceae		Yellow	Red	Red	Red	Yellow	Yellow	Yellow	Grey
<i>Geum triflorum</i>	Rosaceae		Yellow	Red	Yellow			Grey		
<i>Lepidium perfoliatum</i>	Brassicaceae		Grey	Red	Yellow	Grey				
<i>Microsteris gracilis</i>	Polemoniaceae		Yellow	Red	Yellow	Grey				
<i>Lomatium macrocarpum</i>	Apiaceae		Grey	Red	Yellow	Grey				
<i>Lithophragma glabra</i>	Saxifragaceae		Grey	Red	Yellow	Grey				
<i>Lithophragma parviflorum</i>	Saxifragaceae		Grey	Red	Yellow	Grey				
<i>Antennaria umbrinella</i>	Asteraceae		Grey	Red	Yellow			Grey		

<i>Silene latifolia</i>	Caryophyllaceae
<i>Astragalus miser</i>	Fabaceae
<i>Berteroa incana</i>	Brassicaceae
<i>Trifolium repens</i>	Fabaceae
<i>Gaillardia aristata</i>	Asteraceae
<i>Erigeron divergens</i>	Asteraceae
<i>Phemeranthus sediformis</i>	Montiaceae
<i>Ribes lacustre</i>	Grossulariaceae
<i>Viola tricolor</i>	Violaceae
<i>Trifolium hybridum</i>	Fabaceae
<i>Asparagus officinalis</i>	Asparagaceae
<i>Erysimum inconspicuum</i>	Brassicaceae
<i>Artemisia michauxiana</i>	Asteraceae
<i>Opuntia fragilis</i>	Cactaceae
<i>Rosa acicularis</i>	Rosaceae
<i>Lonicera ciliosa</i>	Caprifoliaceae
<i>Lonicera periclymenum</i>	Caprifoliaceae
<i>Tragopogon dubius</i>	Asteraceae
<i>Toxicodendron radicans</i>	Anacardiaceae
<i>Centaurea cyanus</i>	Asteraceae
<i>Potentilla recta</i>	Rosaceae
<i>Orobanche fasciculata</i>	Orobanchaceae
<i>Crepis tectorum</i>	Asteraceae
<i>Cornus canadensis</i>	Cornaceae
<i>Eriogonum heracleoides</i>	Polygonaceae





	main local flowering period; pers. obs., subject to revision
	early and late individuals; pers. obs., subject to revision
	published species flowering limits

Species sequence by, first, **1. the onset of their main local flowering, then by**
2. the onset of early local flowering, then by
3. the end of the main local flowering

	# species	N	E	%N	%E
Group 1 spp. begin flowering before end-April Rows 2-112	111	88	23	79	21
Group 2 spp. start flowering after end-April Rows 113-218 but before end-May	106	73	33	69	31
Group 3 spp. start flowering after end of May Rows 219-405	187	134	53	72	28
	404	295	109	73	27

